

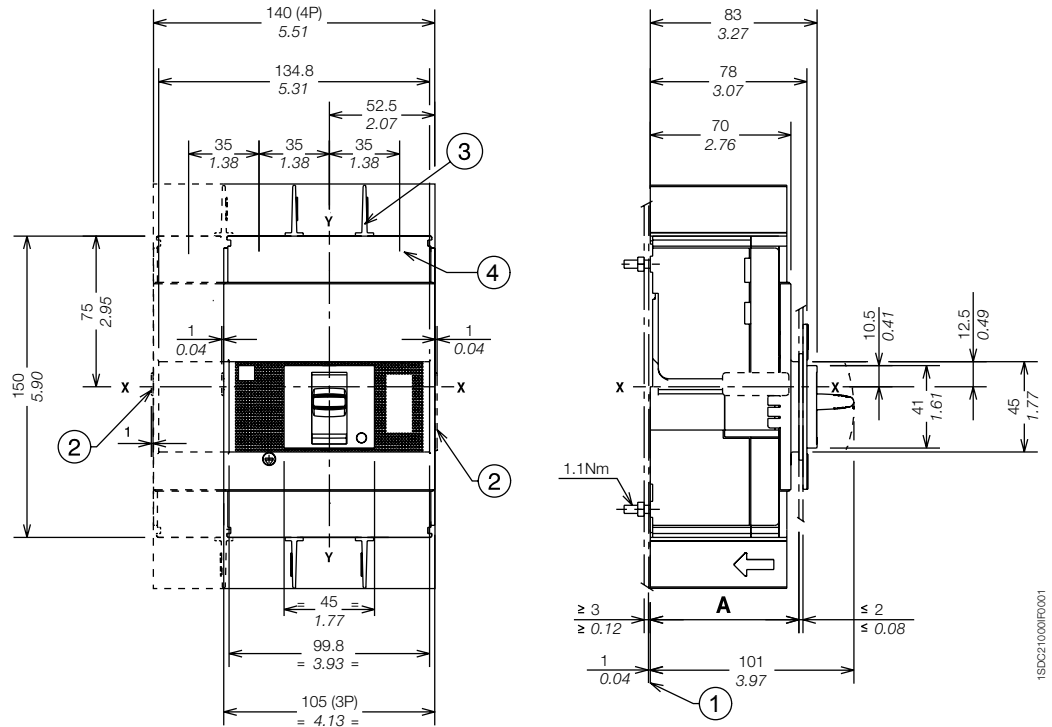
# Approximate dimensions

## Tmax XT3 - Installation for fixed circuit breaker

### Captions

- ① Insulating plate compulsory
- ② Overall dimension of optional wiring ducts
- ③ 25mm insulating barriers between phases (compulsory) provided
- ④ Front carter compulsory for through door of the panel  $\leq 25\text{mm}/0,98''$

### Mounting on the backplate

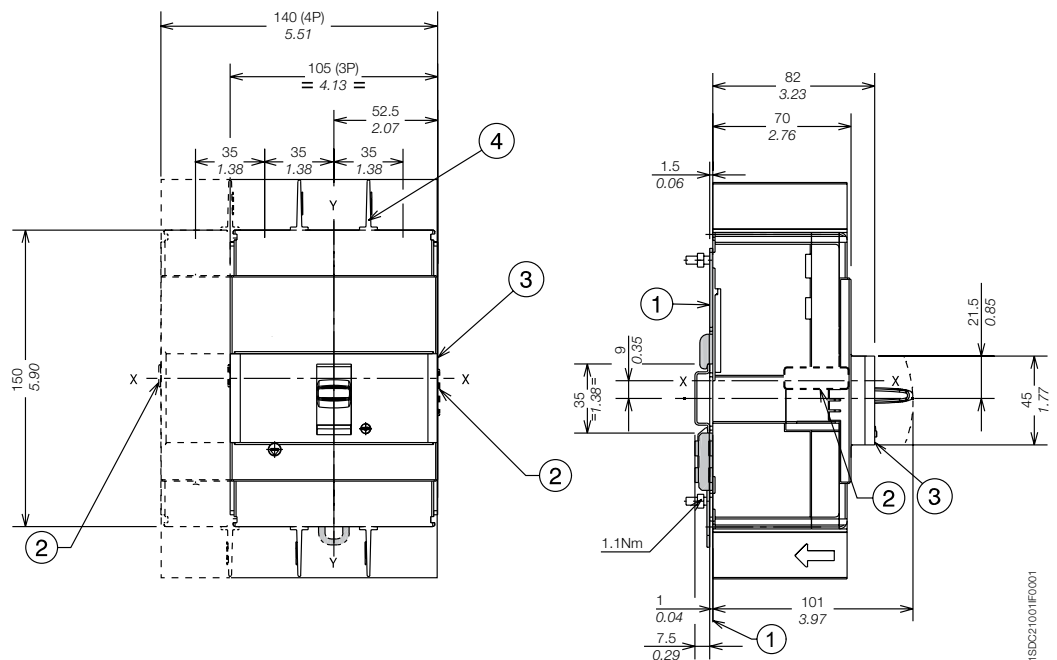


		A
With standard flange	III - IV	74
Without flange	III - IV	71
	III - IV	79

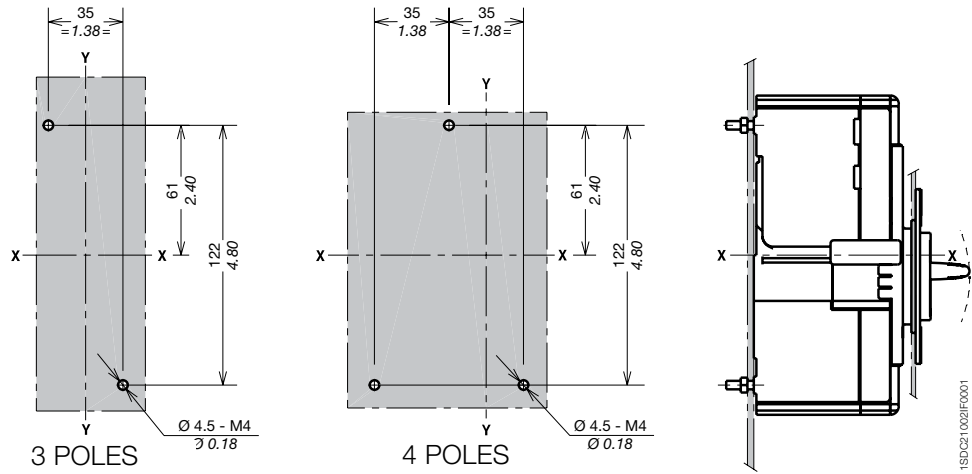
### Mounting on DIN EN 50022 rail

### Captions

- ① Mounting bracket
- ② Optional wiring ducts
- ③ Optional front cover for DIN rail
- ④ 25mm insulating barriers between phases (compulsory) provided



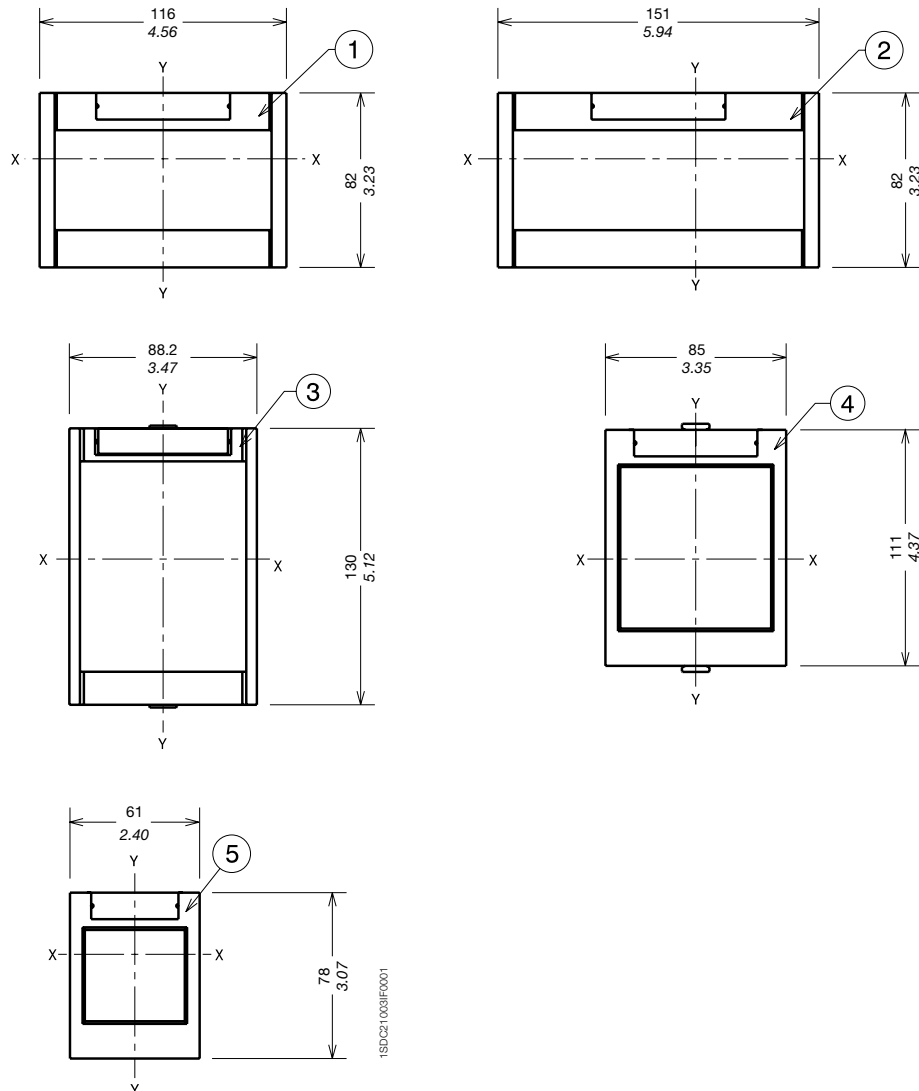
## Drilling template



## Flanges

### Captions

- ① Flange for fixed circuit breaker III
- ② Flange for fixed circuit breaker IV
- ③ Flange for circuit breaker with direct motor operator MOD
- ④ Flange for circuit breaker with direct rotary handle (RHD)
- ⑤ Optional flange

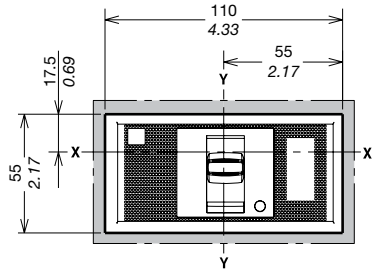


# Approximate dimensions

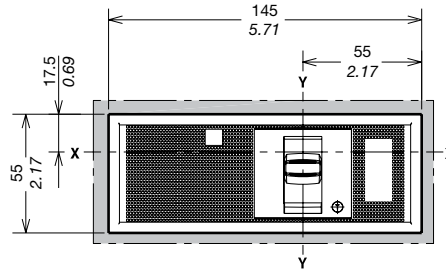
## Tmax XT3 - Installation for fixed circuit breaker

### Drilling templates for compartment door

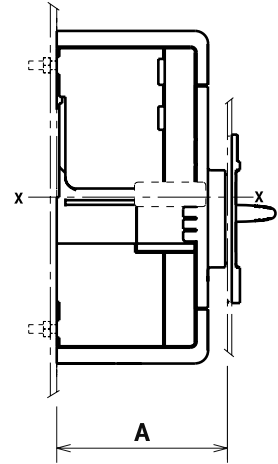
#### With standard flange



A=74  
3 POLES



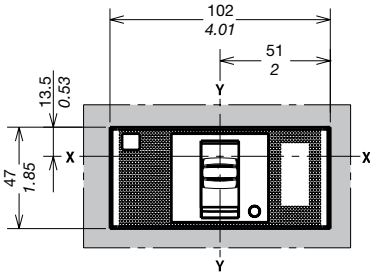
A=74  
4 POLES



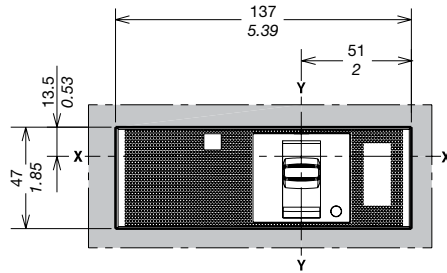
1SDC21004IF0001

5

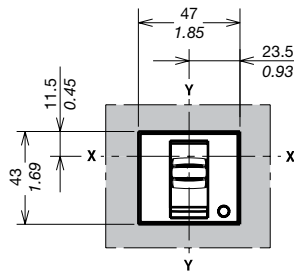
#### Without flange



A=71  
3 POLES



A=71  
4 POLES



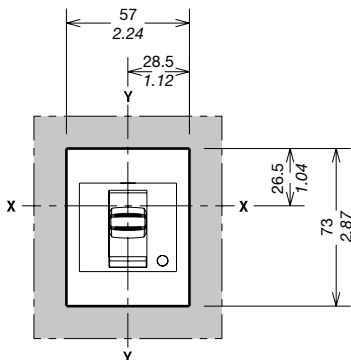
A=79  
3-4 POLES

1SDC21008IF0001

#### With optional flange

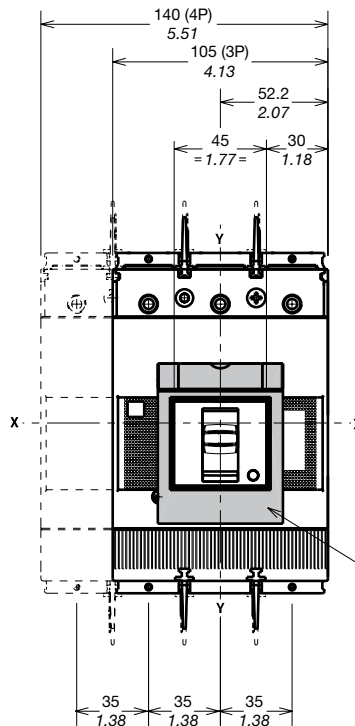
#### Caption

① Optional flange



A=79  
3-4 POLES

1SDC21007IF0001



1SDC21008IF0001

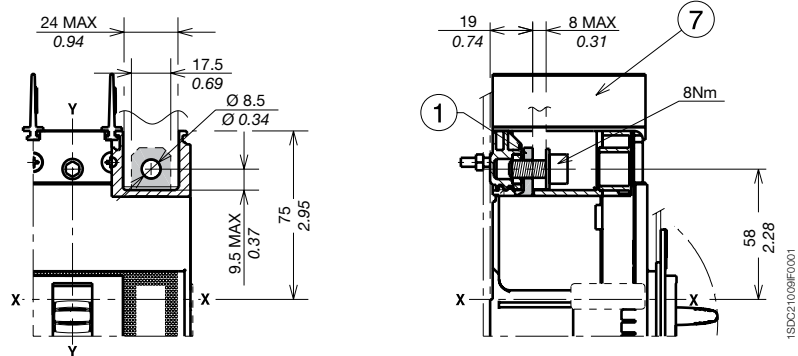
# Approximate dimensions

## Tmax XT3 - Terminals for fixed circuit breaker

### Terminals F

#### Captions

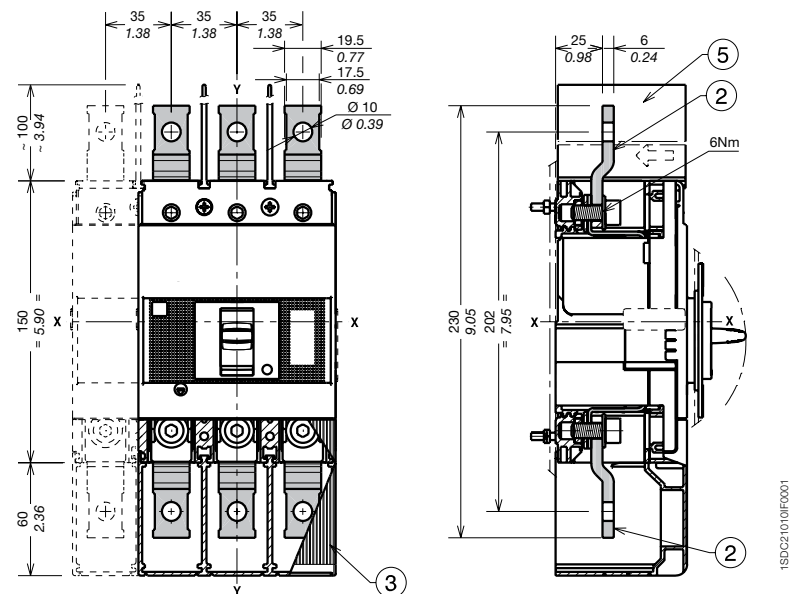
- ① Front terminals for busbar connection
- ⑦ 25mm insulating barriers between phases (compulsory) provided



### Terminals EF

#### Captions

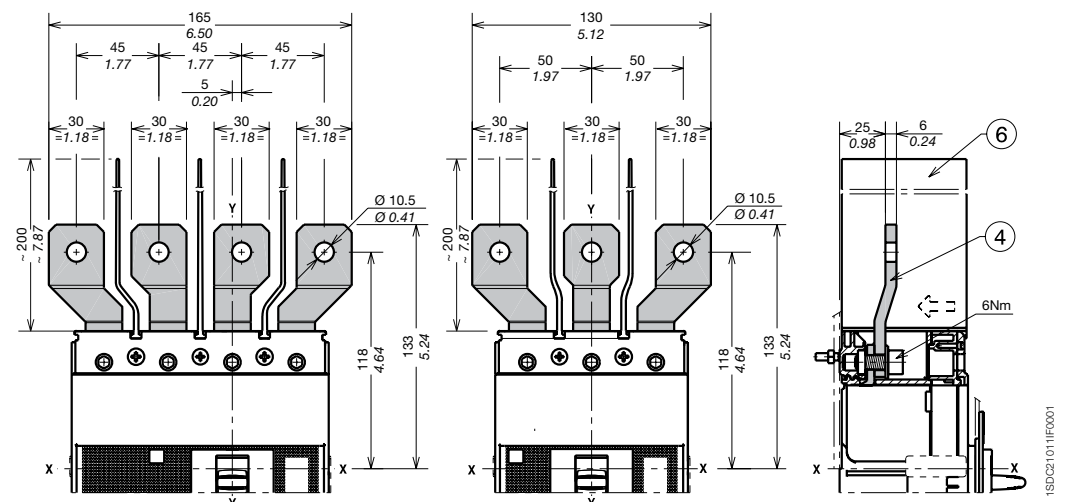
- ② Front extended terminals
- ③ Terminal covers with degree of protection IP40 (optional) not provided
- ⑤ 100mm insulating barriers between phases (compulsory) provided



### Terminals ES

#### Captions

- ④ Front extended spread terminals for busbar connection
- ⑥ 200mm insulating barriers between phases (compulsory) provided



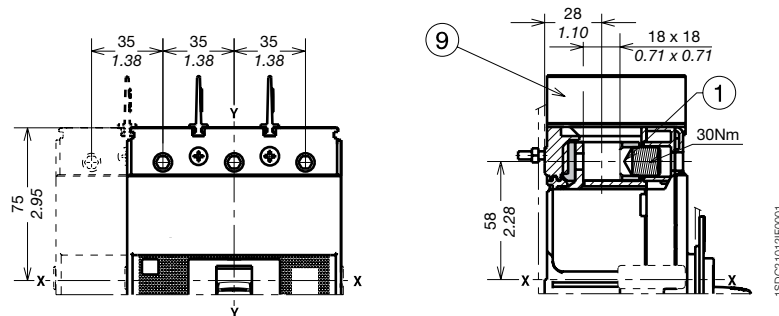
# Approximate dimensions

## Tmax XT3 - Terminals for fixed circuit breaker

### 1x2,5...50mm<sup>2</sup> terminals FCCuAl

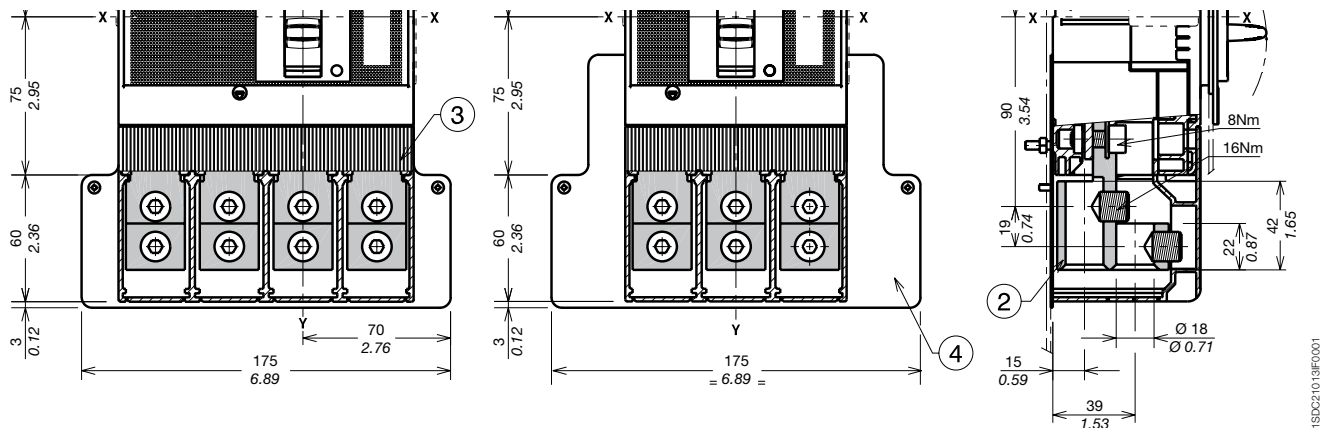
#### Captions

- ① 1x2,5...50mm<sup>2</sup> terminals FCCuAl
- ⑨ 25mm insulating barriers between phases (compulsory provided as standard with the circuit breaker)



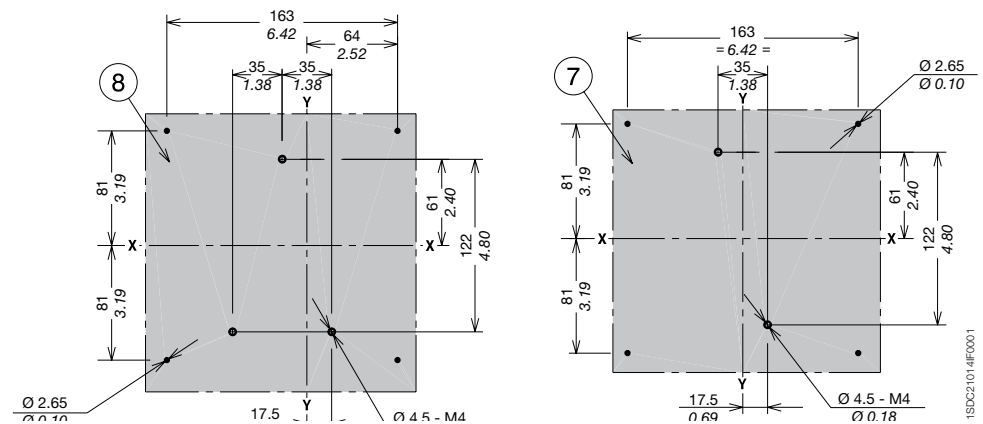
5

### 2x35...150mm<sup>2</sup> terminals FCCuAl



#### Captions

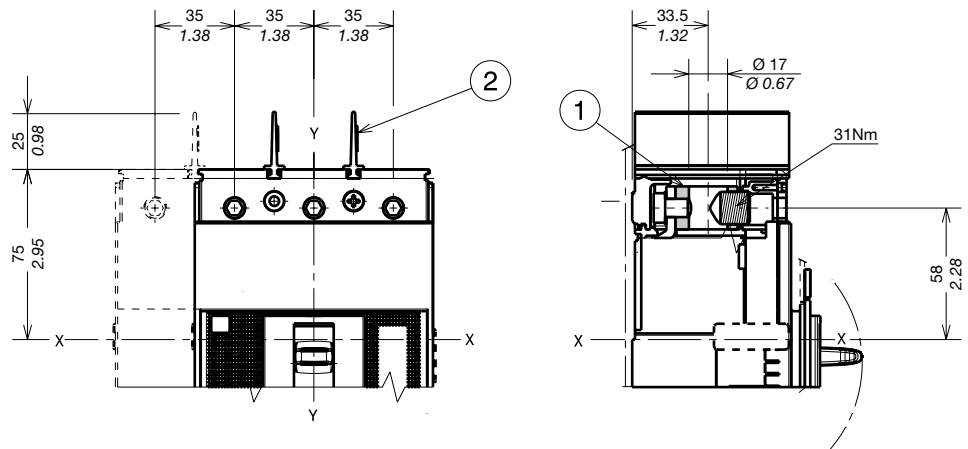
- ② 2x35...150mm<sup>2</sup> terminals FCCuAl
- ③ Terminal covers with degree of protection IP40 (optional) provided
- ④ Provided rear insulated plate (compulsory for CuAl 2x150mm<sup>2</sup> cables)
- ⑦ Drilling template for mounting circuit breaker on sheet III with rear insulated plate
- ⑧ Drilling template for mounting circuit breaker on sheet IV with rear insulated plate



## 25...150mm<sup>2</sup> terminals FCCuAl

### Captions

- ① 25...150mm<sup>2</sup> terminals FCCuAl
- ② 25mm insulating barriers between phases (compulsory) provided as standard with the circuit breaker

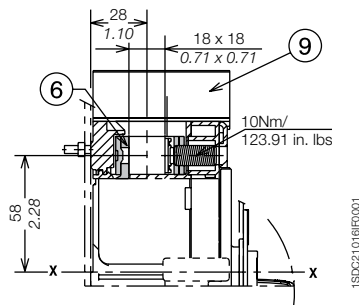


1SD0C210151F0001

## Terminals FCCu

### Captions

- ⑥ Front terminals FCCu
- ⑨ 25mm insulating barriers between phases (compulsory) provided as standard with the circuit breaker

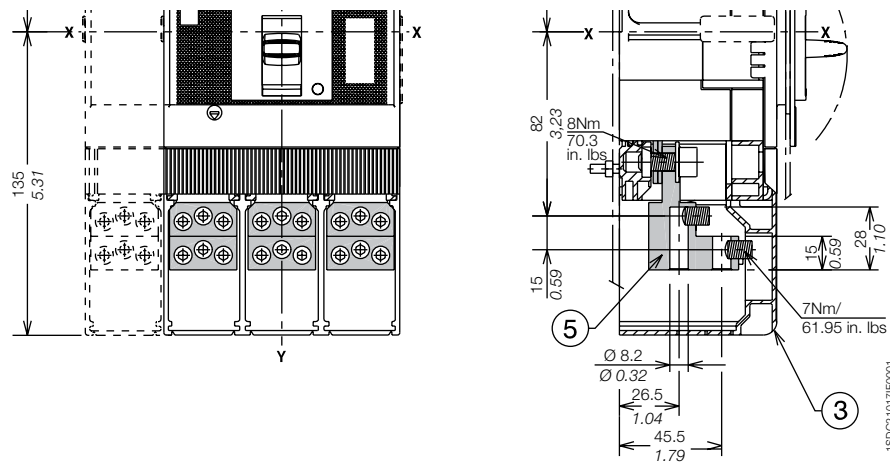


1SD0C210161F0001

## Terminals MC

### Captions

- ③ Terminal covers with degree of protection IP40 (optional) provided
- ⑤ Front terminal for multi-cable connection



1SD0C210171F0001

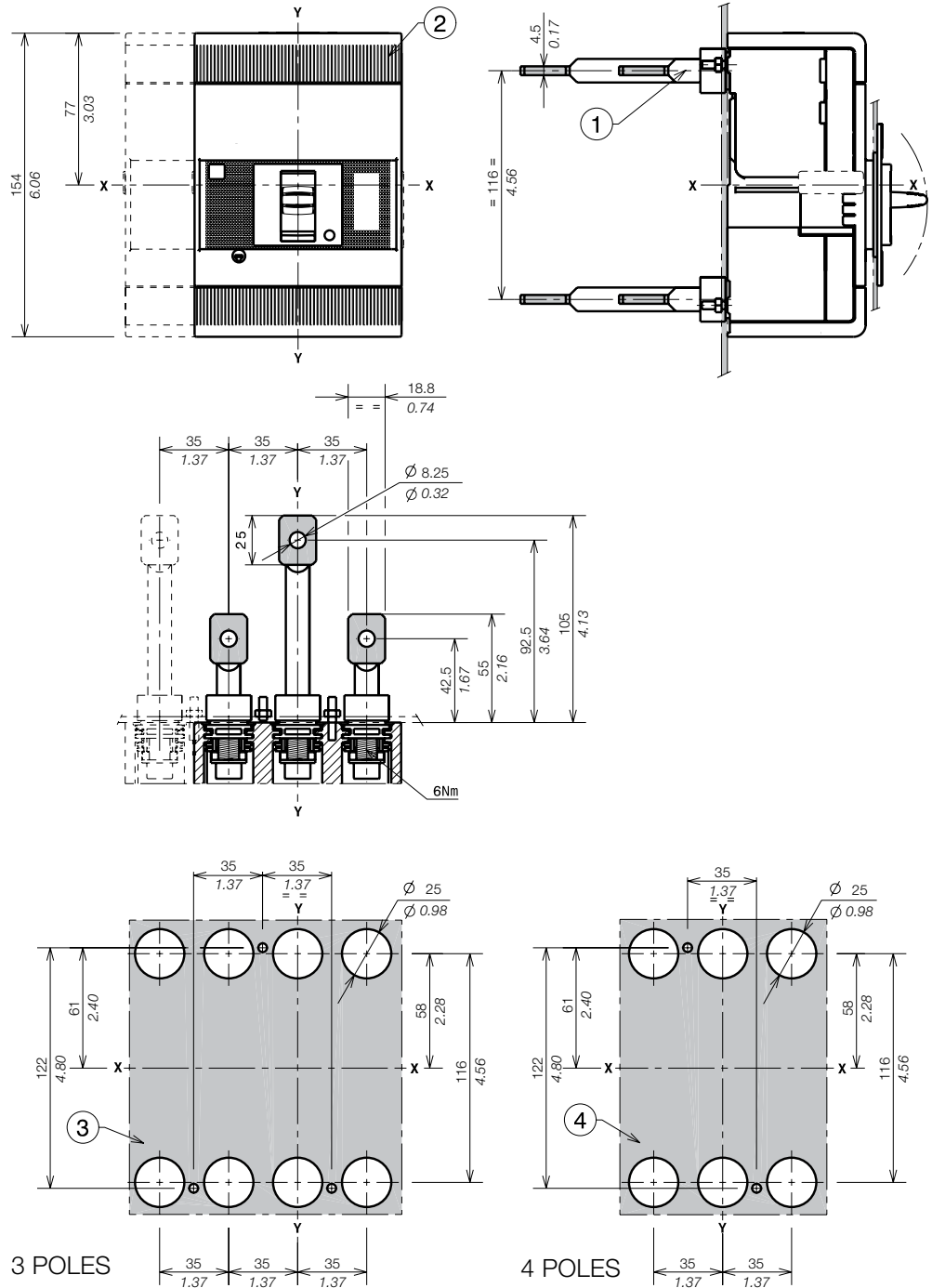
# Approximate dimensions

## Tmax XT3 - Terminals for fixed circuit breaker

### Terminals R

#### Captions

- ① Adjustable rear terminals
- ② Bottom terminal covers with degree of protection IP30 (optional) provided
- ③ Drilling template for mounting circuit breaker IV on sheet
- ④ Drilling template for mounting circuit breaker III on sheet



1SD21053CF001

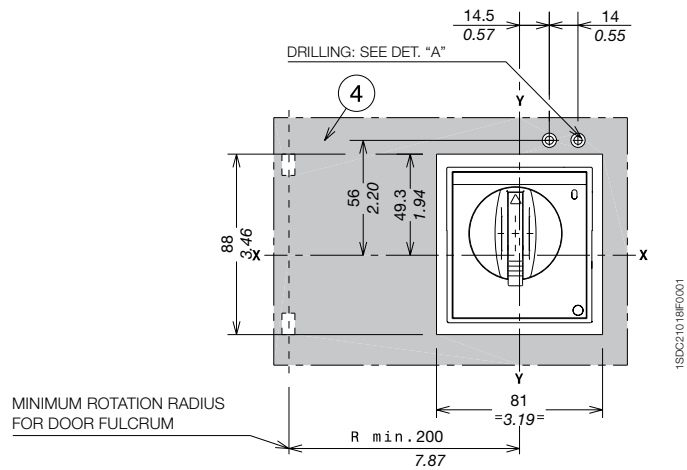
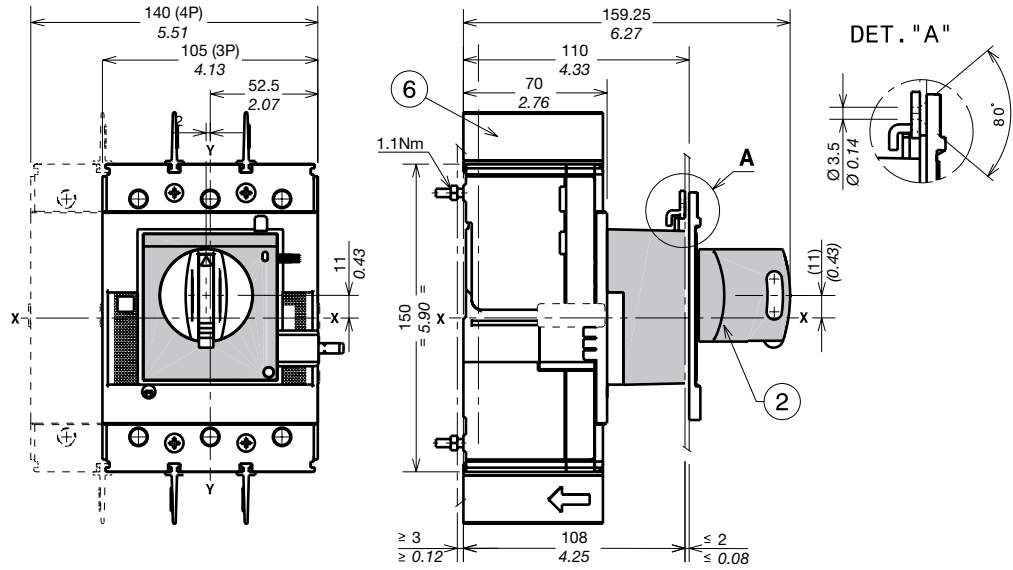
# Approximate dimensions

## Tmax XT3 - Accessories for fixed circuit breaker

### Rotary handle operating mechanism on circuit breaker (RHD)

#### Captions

- ② Rotary handle operating mechanism on circuit breaker RHD
- ④ Drilling template of door with direct rotary handle
- ⑥ 25mm insulating barriers between phases (compulsory) provided as standard with the circuit breaker

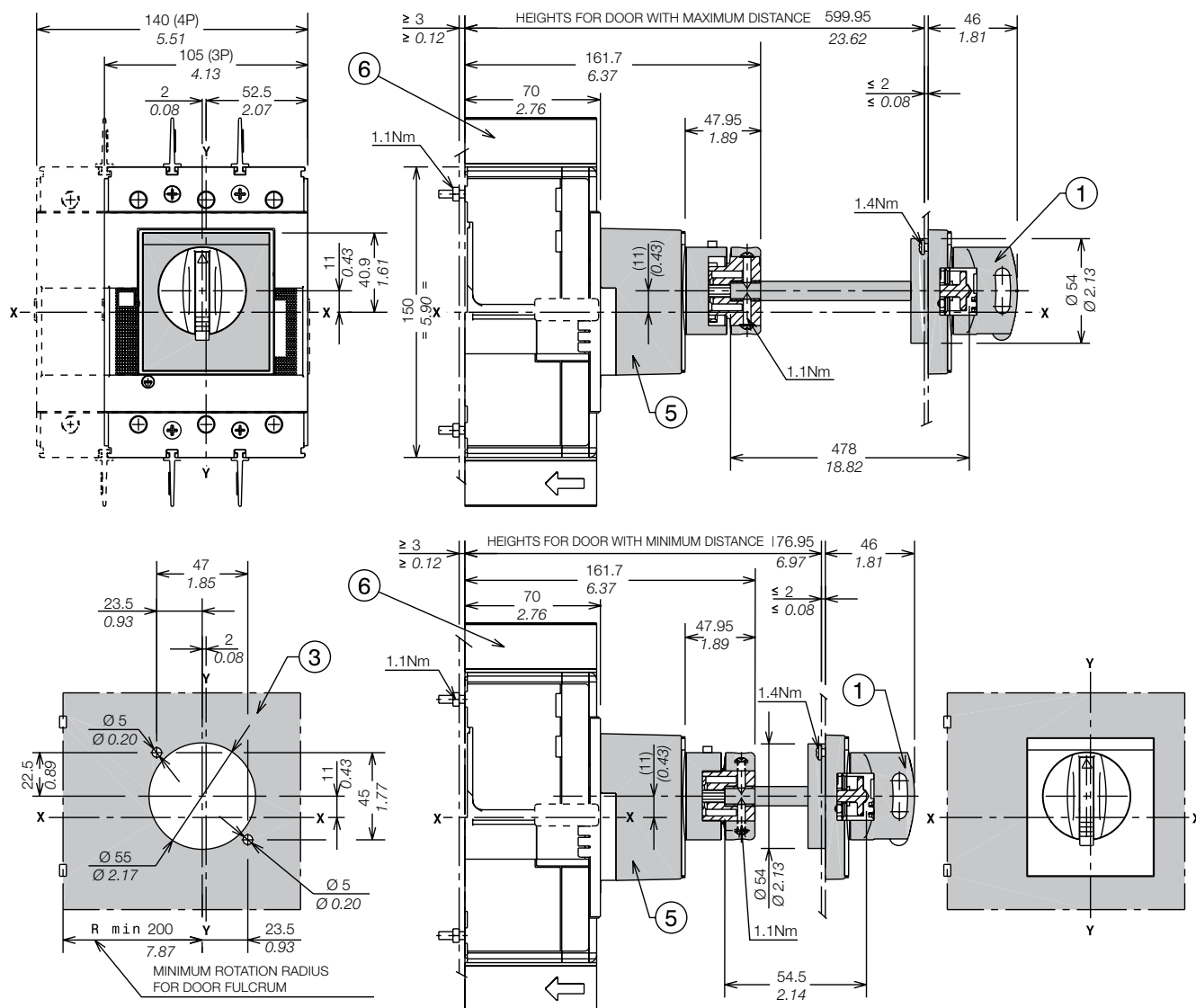




# Approximate dimensions

## Tmax XT3 - Accessories for fixed circuit breaker

### Rotary handle operating mechanism on the compartment door (RHE)



#### Captions

- ① Rotary handle operating mechanism on the compartment door (RHE)
- ③ Drilling template of door with extended rotary handle (RHE)
- ⑤ Transmission unit
- ⑥ 25mm insulating barriers between phases (compulsory) provided as standard with the circuit breaker



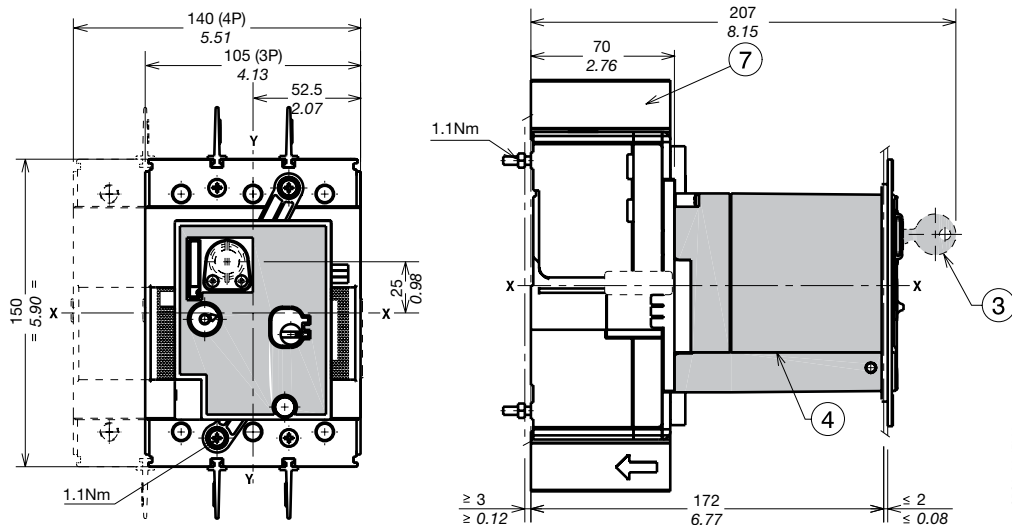
# Approximate dimensions

## Tmax XT3 - Installation for plug-in circuit breaker

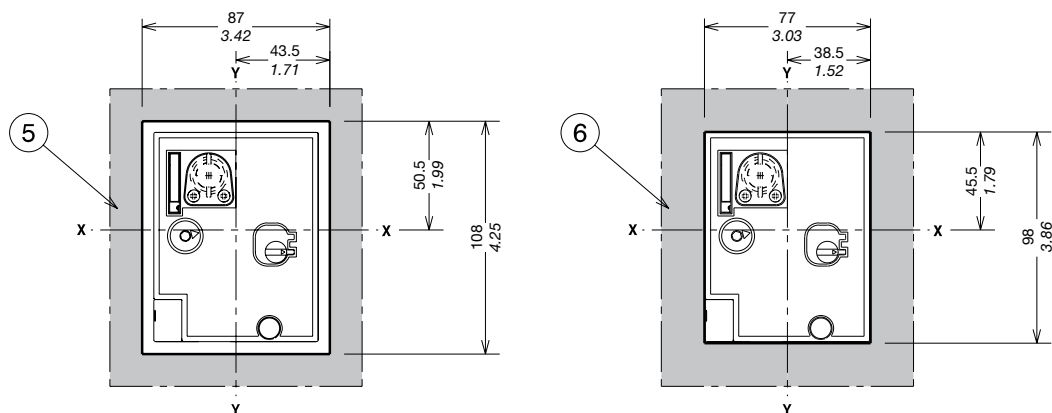
### Direct motor operator (MOD)

#### Captions

- ③ Key lock (not provided)
- ④ Direct motor operator MOD
- ⑤ Drilling template of door with MOD with flange
- ⑥ Drilling template of door with MOD without flange
- ⑦ 25mm insulating barriers



1SDC21021FR001



1SDC21022FR001



# Approximate dimensions

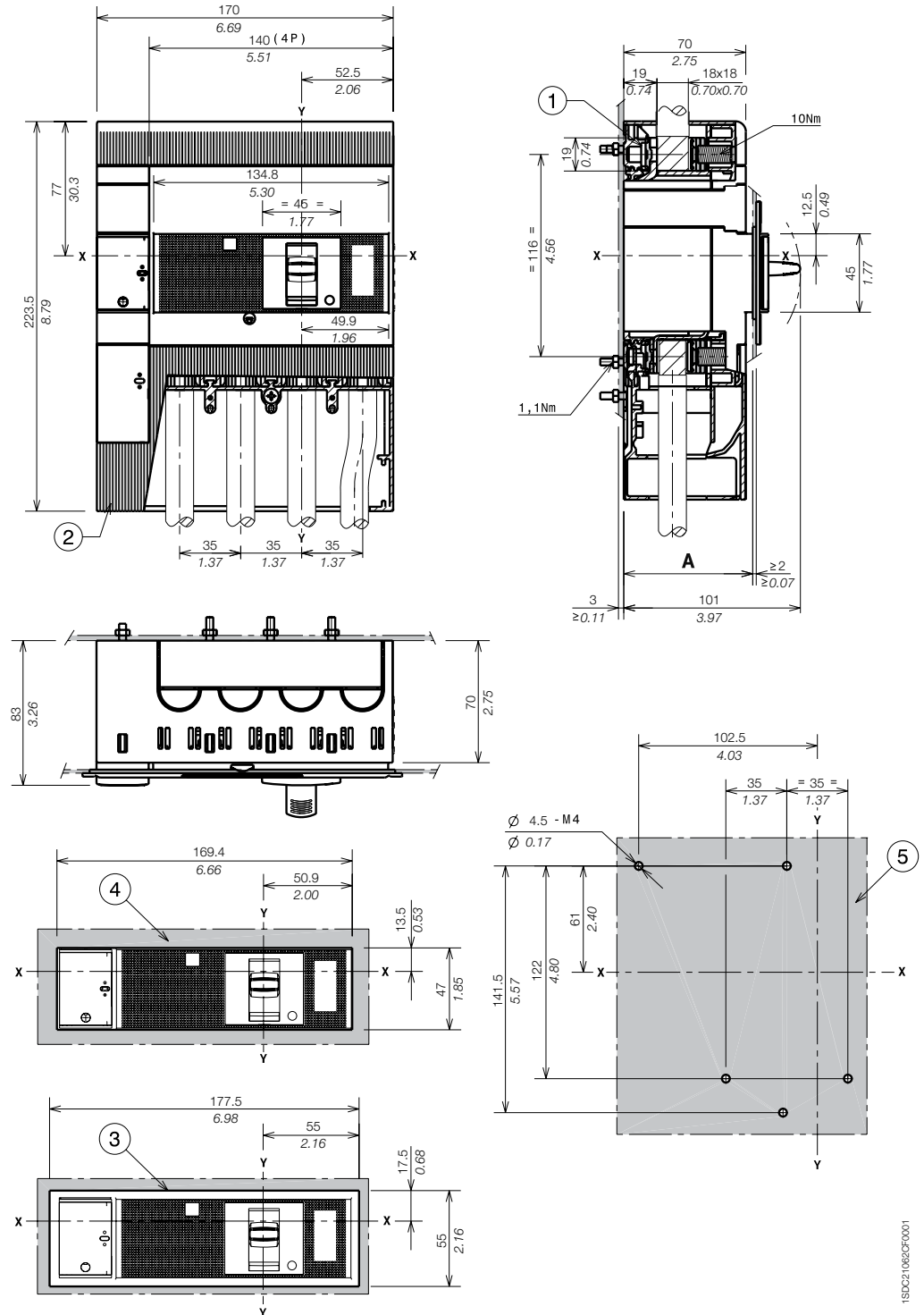
## Tmax XT3 - Installation for plug-in circuit breaker

### RC Inst and RC Sel residual current release for 4-pole circuit breaker

#### Captions

- ① Front terminals for cable connection
- ② Terminal covers with degree of protection IP40
- ③ Drilling template of door with direct rotary handle with flange
- ④ Drilling template of door with direct rotary handle without flange
- ⑤ Drilling template for mounting circuit breaker on sheet

5

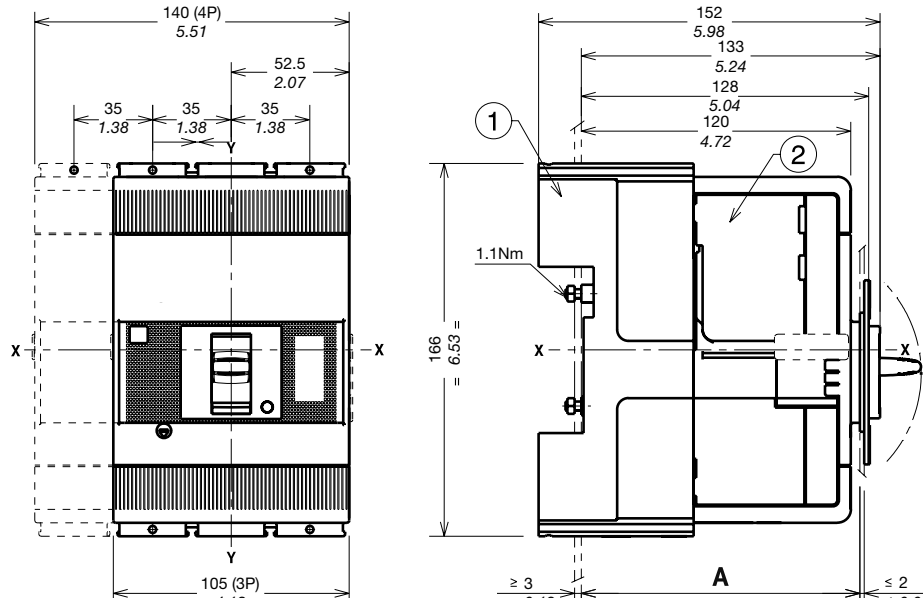


		A
With standard flange	IV	74
Without flange	IV	71

## Mounting on the backplate

### Captions

- ① Fixed part
- ② Moving part



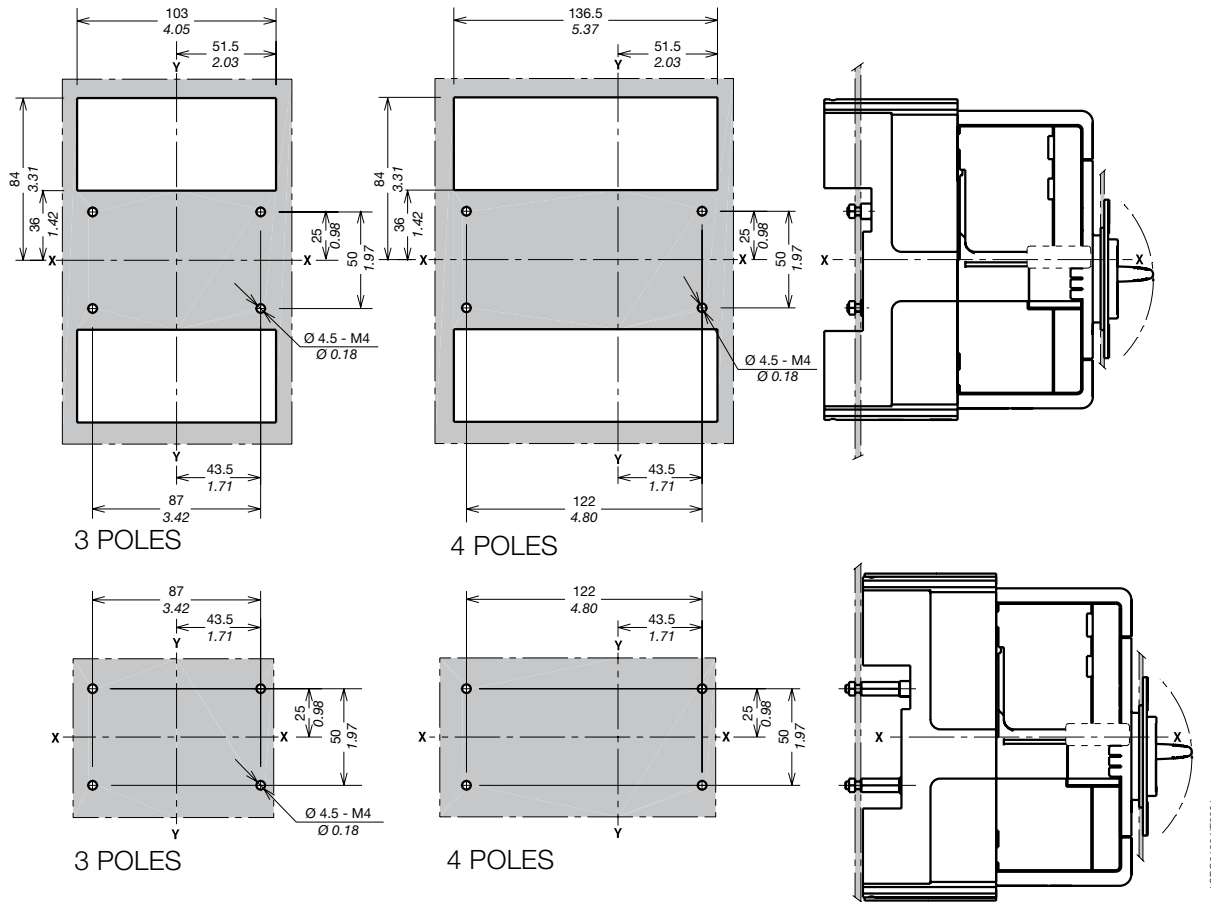
Mounting at 50mm		A
With standard flange	III - IV	124
Without flange	III - IV	121
	III - IV	129

Mounting at 70mm for extended front terminals		A
With standard flange	III - IV	144
Without flange	III - IV	141
	III - IV	149

# Approximate dimensions

## Tmax XT3 - Installation for plug-in circuit breaker

### Drilling templates for the backplate

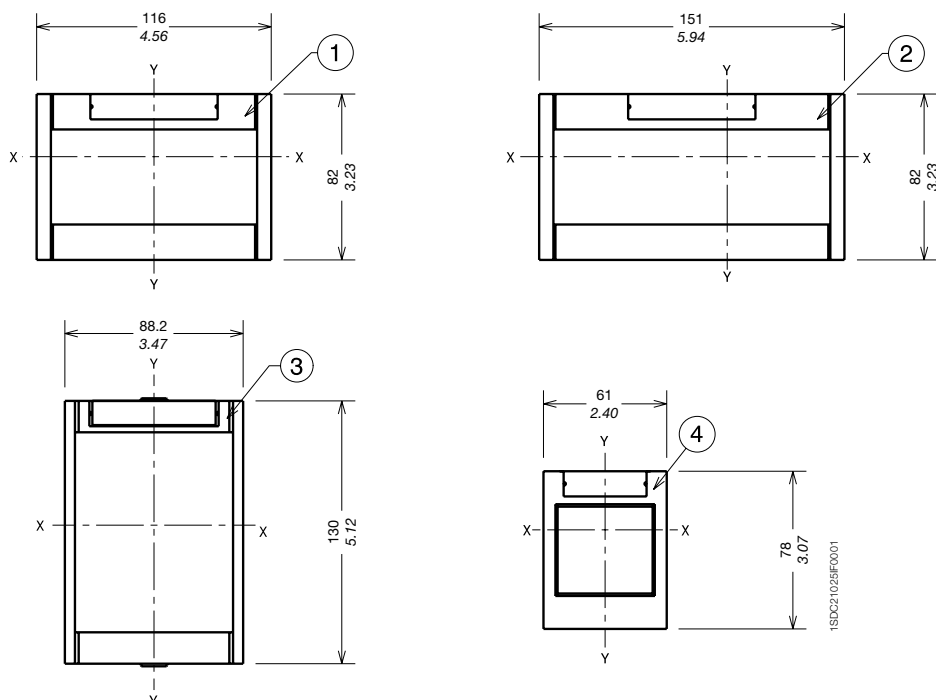


5

### Flanges

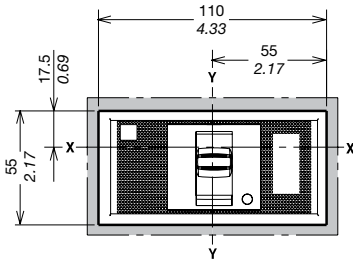
#### Captions

- ① Flange for plug-in circuit breaker III
- ② Flange for plug-in circuit breaker IV
- ③ Flange for plug-in circuit breaker with direct motor operator MOD
- ④ Optional flange

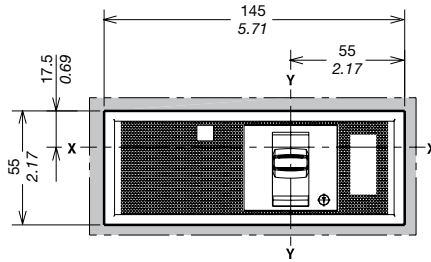


## Drilling templates for compartment door

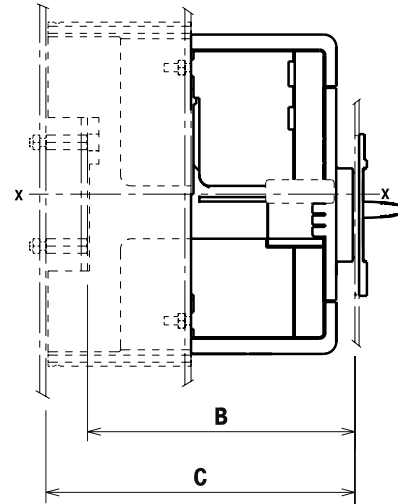
### With standard flange



B=124 C=144  
3 POLES

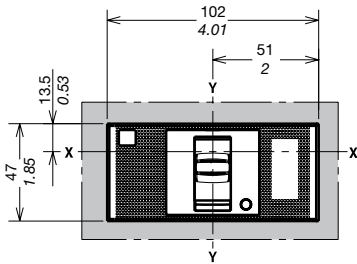


B=124 C=144  
4 POLES

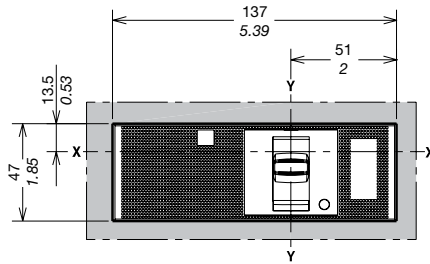


1SDC21026F0001

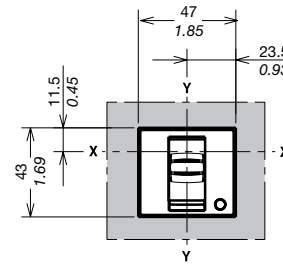
### Without flange



B=121 C=141  
3 POLES



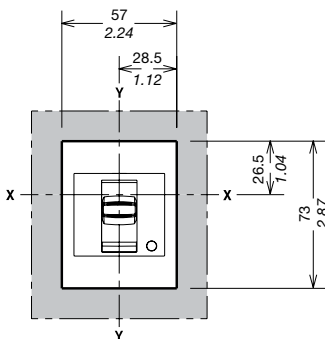
B=121 C=141  
4 POLES



B=129 C=149  
3-4 POLES

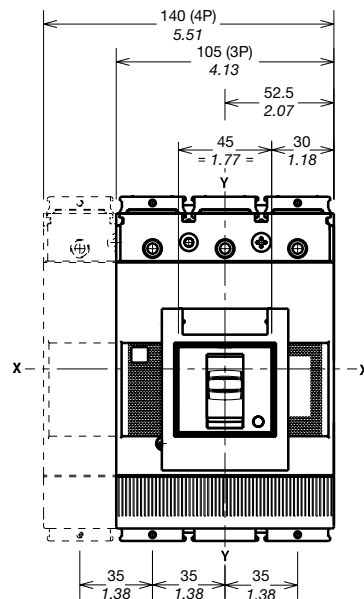
1SDC21027F0001

### With optional flange



B=129 C=149  
3-4 POLES

1SDC21029F0001



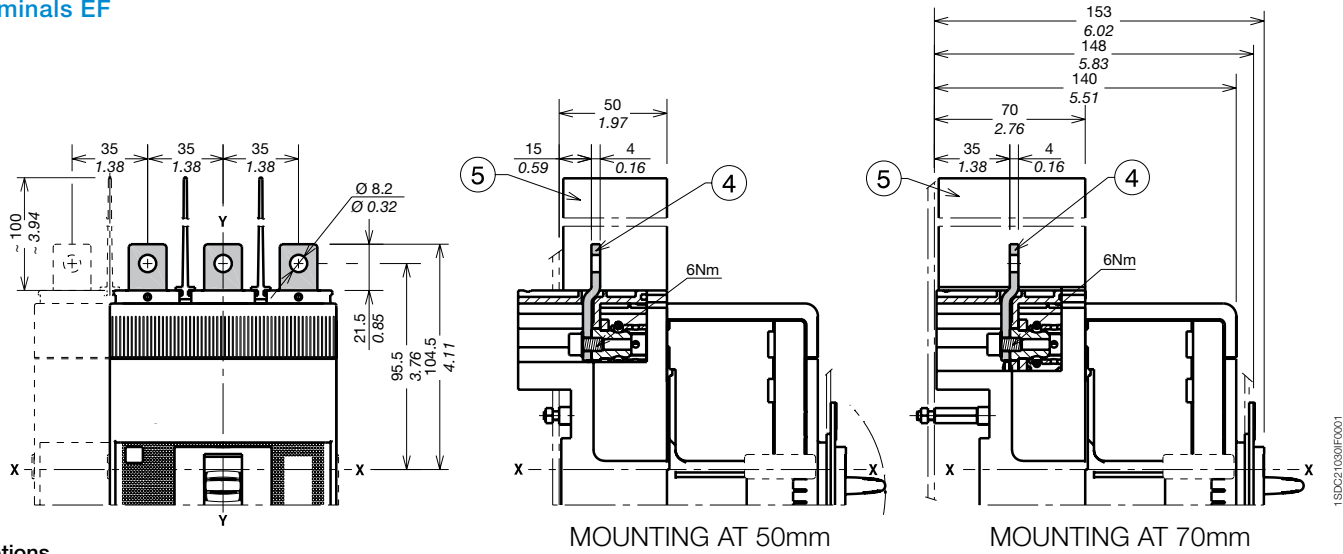
1SDC21029F0001



# Approximate dimensions

## Tmax XT3 - Terminals for plug-in circuit breaker

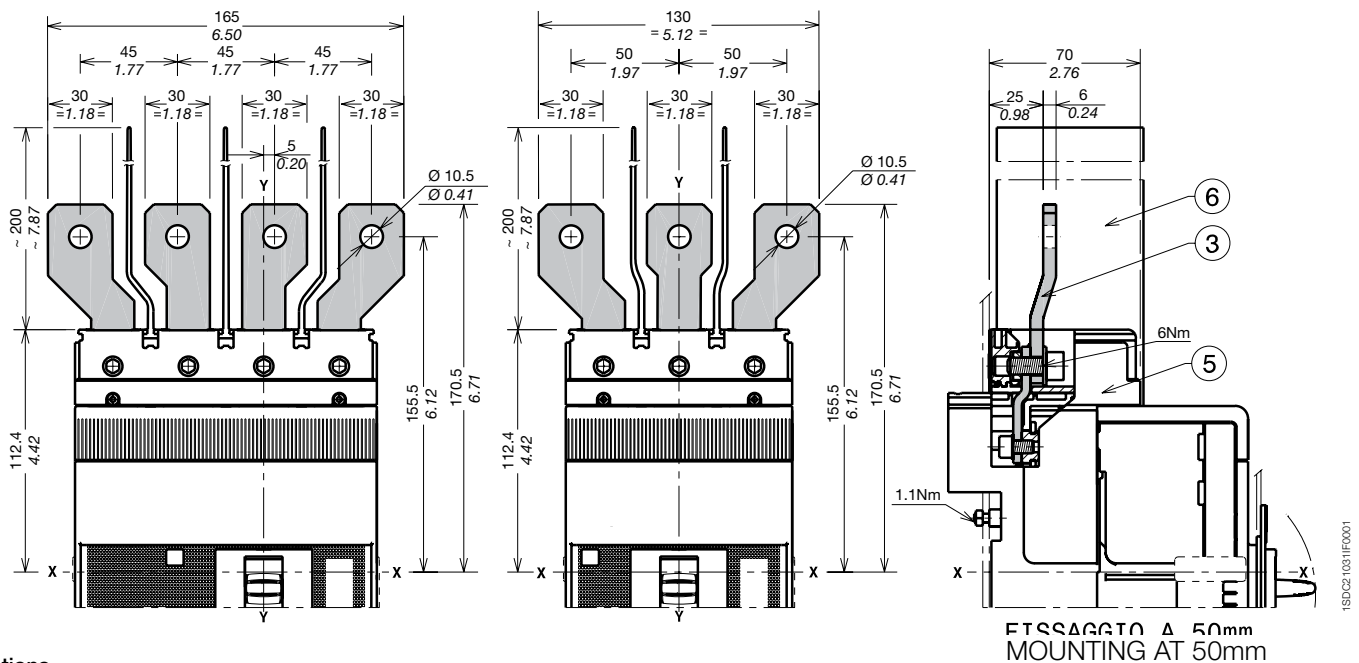
### Terminals EF



#### Captions

- ④ Front extended terminals
- ⑤ 100mm insulating barriers between phases (compulsory) provided

### Terminals ES



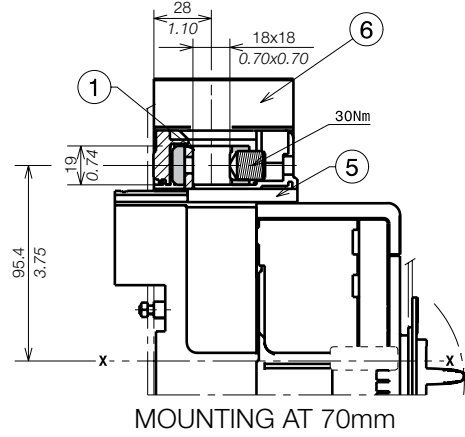
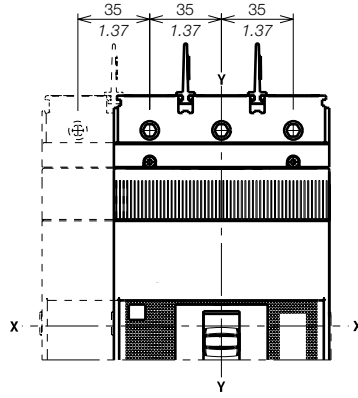
#### Captions

- ③ Front extended spread terminals for busbar connection
- ⑤ Adapter for fixed part (compulsory) not provided
- ⑥ 200mm insulating barriers between phases (compulsory) provided

## 1x2.5...50mm<sup>2</sup> terminals FCCuAl

### Captions

- ① 1x90...185mm<sup>2</sup> front terminal FCCuAl
- ⑤ Adapter for fixed part (compulsory) not provided
- ⑥ 25mm insulating barriers between phases (compulsory) provided

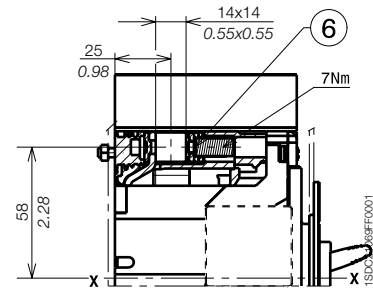
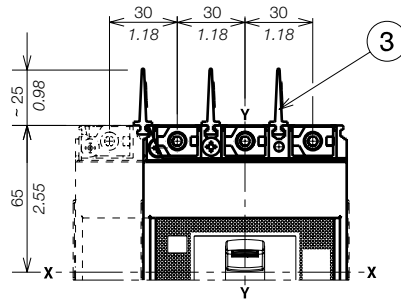


1SDC21069FF0001

## Terminals FCCu

### Captions

- ③ 25mm insulating barriers between phases (compulsory) provided as standard with the circuit breaker
- ⑥ Terminals FCCu

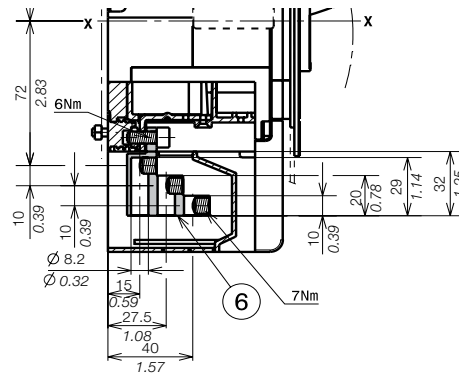
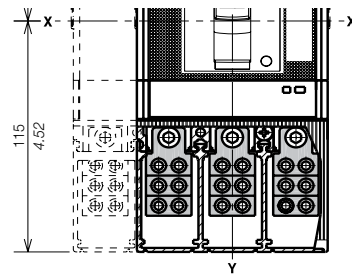


1SDC21089FF0001

## Terminals MC

### Caption

- ⑥ Multi-cable terminals



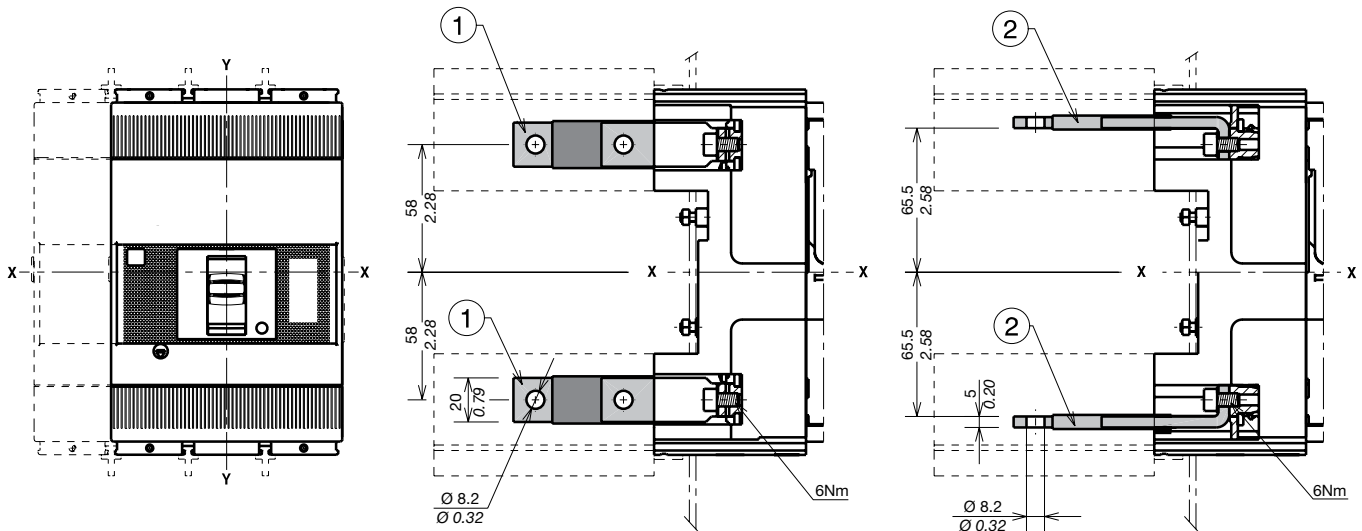
1SDC21069FF0001

# Approximate dimensions

## Tmax XT3 - Terminals for plug-in circuit breaker

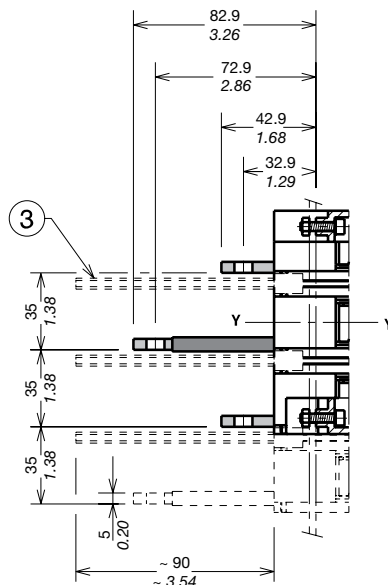
### Terminals HR/VR

5

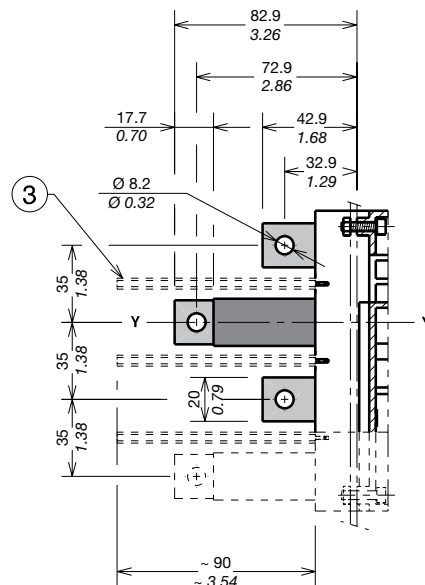


### Captions

- ① Rear vertical terminals
- ② Rear horizontal terminals
- ③ 90mm insulating barriers between phases (compulsory) not provided



MOUNTING AT 50mm



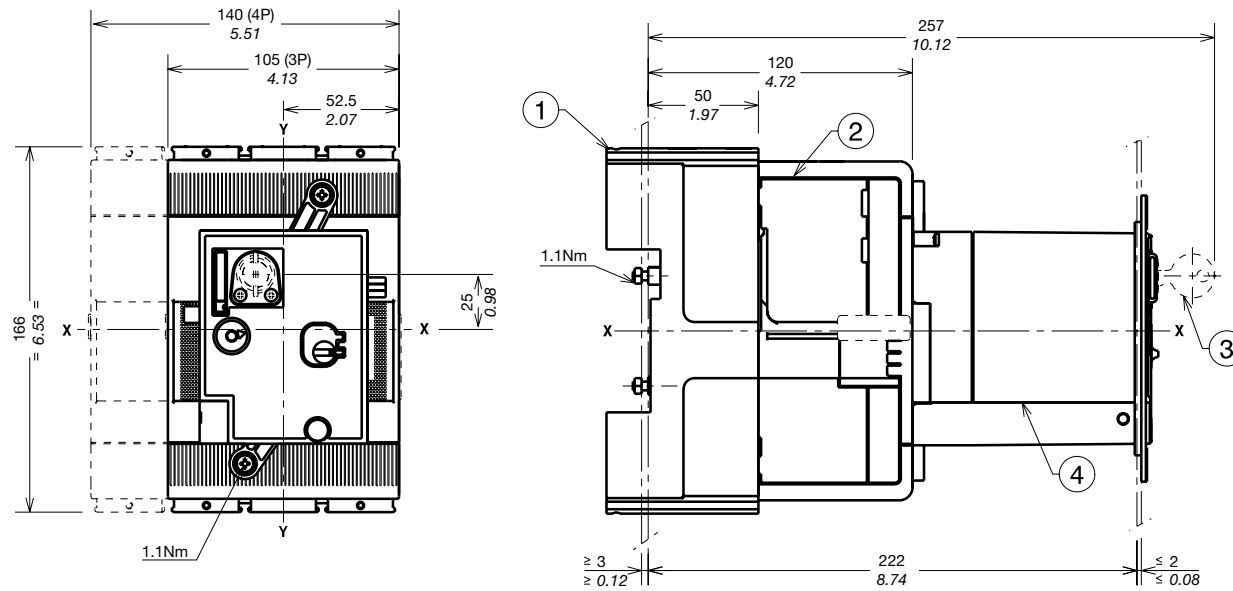
MOUNTING AT 50mm

1SDC21 0421R0001

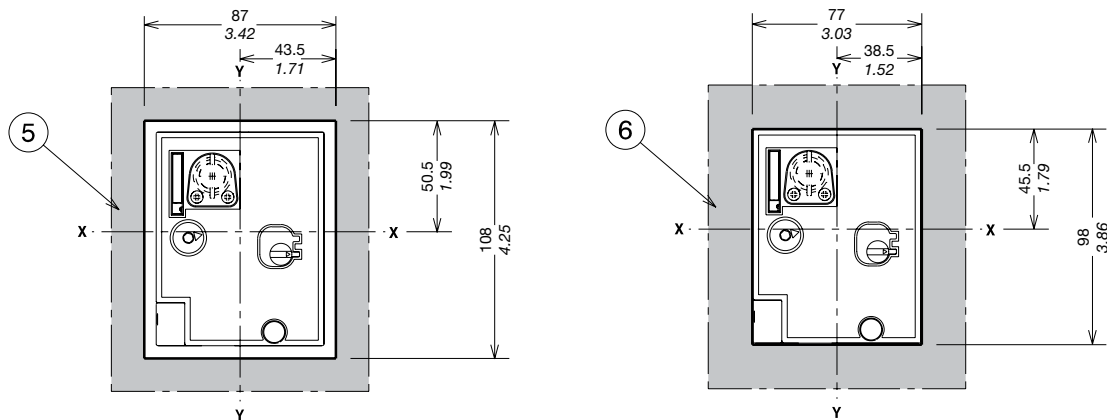
# Approximate dimensions

## Tmax XT3 - Accessories for plug-in circuit breaker

### Direct motor operator (MOD)



MOUNTING AT 50mm



### Captions

- ① Fixed part
- ② Moving part
- ③ Key lock (not supplied)
- ④ Direct motor operator MOD
- ⑤ Drilling template of door with MOD with flange
- ⑥ Drilling template of door with MOD without flange

1SDC210331F0001